

**Hailei海雷**

# Home ESS-HV Series

## 家用储能电池系统—高压堆叠

High Voltage Stacked Home Energy Storage System



**BIS CB**

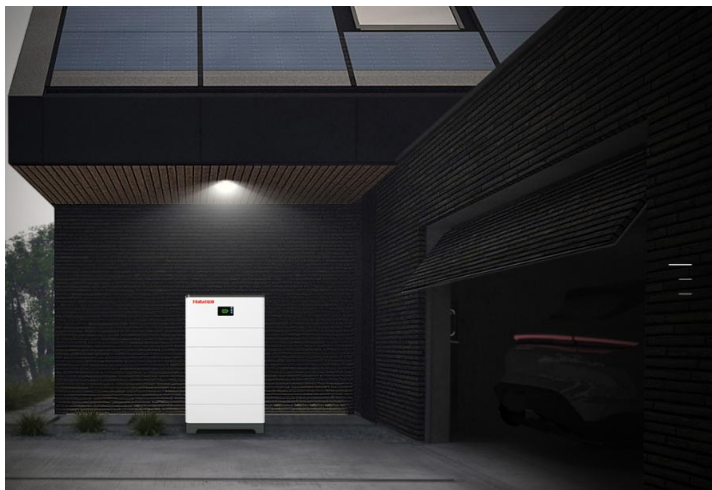


**UN38.3**

**MSDS**  
Material Safety Data Sheet



## DESCRIPTION / 产品概述



家用储能系统，模块化高压电池，适用于住宅储能，一套解决全屋用电。

Home energy storage system, modular high-voltage battery, suitable for residential energy storage, one set to solve the electricity consumption of the whole house.

## FEATURES / 产品优势



采用安全的磷酸铁锂方形电池作为储能主体，容量大、重量轻、功率大等特性；

Using safe lithium iron phosphate square battery as the main body of energy storage, with feature of large capacity, light weight, large power;



模块化设计 运输快捷 安装简单易用

Modular design for fast transportation and easy installation



模块化结构，可形成多种能量等级的小型组合，维护方便，即插即用；

Modular structure, can form a small combination of various energy levels, easy maintenance, plug and play;



LED灯实时显示设备的参数，运行状态一目了然；

LED lights display the parameters of the equipment in real time, and the running status is clear at a glance;

- 可匹配市场上主流厂家混合逆变器，使用方便；

It can match to main hybrid inverter in the market, easy to use

- 具有过充电、过放电保护、电源监视和低电量报警功能；

With functions of over charge and discharge protection, power supply monitoring and low power alarm;

- 单簇最大容量15.36kWh,支持16簇并机；

The maximum capacity of a single cluster is 20.48kWh, and it supports 16 clusters in parallel



## PARAMETER / 技术规格

Basic Parameters/ 基础参数	3-module	4-module	5-module	6-module
标称容量 (KWh)Nominal Capacity	7.68	10.24	12.8	15.36
电芯配组 Cell Matching	48S1P	64S1P	80S1P	96S1P
工作电压范围 (V) Working Voltage Range	136.8-172.81	182.4-230.4	228-288	273.6-345.6
重量 Weight (kg)	115	145	175	205
标称电压 (V) Nominal voltage	153.6	204.8	256.0	307.2
尺寸 Dimension (WxDxH) (mm)	550x430 x697.5	550x430 x826.5	550x430 x955.5	550x430 x1084.5
电芯类型 Battery Type	LFP(LiFePO4)			
额定工作电流 Nominal Working Current	50			
通讯方式 Communication Port	CAN/RS485			
工作温度范围 Working Temperature Range	Charge:0-45°C/Discharge:-10-50°C			
防护等级 Waterproof	IP55			
安装方式 Installation Method	Floor-standing			
循环寿命 Cycle Life	>6000, 25°C/77°F, 80%DOD			
峰值充放电电流 Peak charge/discharge current(@25°C,5S)	63A			
自放电率 Discharge rate of Module	≤3.5%/month/@25°C			
串联功能 Module Series connection/Module	3S~6S			
并联功能 Parallel connection	16 units in parallel/16 簇并联			

## APPLICATION / 产品应用

